

# Oracle HTML DB

Mike Hichwa

VP HTML DB Development  
Oracle Corporation

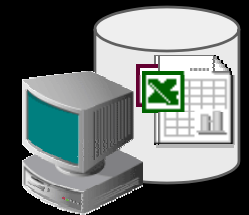
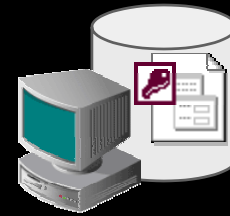
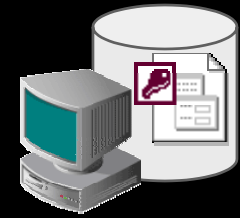
ORACLE

# HTML DB

- Used to create DB centric web applications
- Part of Oracle 10g
- Supported with 9iR2 (9.2.0.3)
- Available with Standard and Enterprise Editions

# Common Issues in Workgroup Information Management

- Fragmented
- Insecure
- Inaccurate
- Platform dependent
- Not Web Friendly



# HTML DB

- The Qualities of a Personal Database
  - Productivity
  - Ease of Use
  - Flexibility
- The Qualities of an Enterprise Database
  - Security
  - Integrity
  - Scalability
  - Availability
  - Portability
- Built for the Web

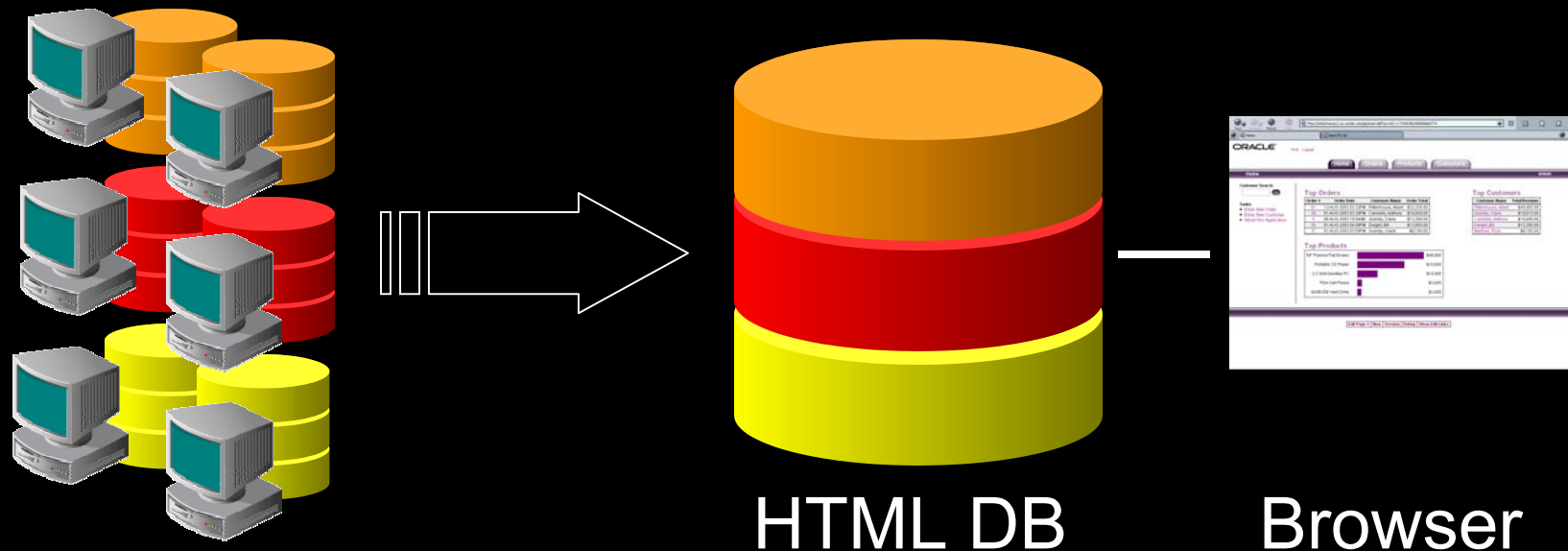
# HTML DB Value Proposition

- Manage workgroup data more effectively and efficiently
- Build “tactical” or “opportunistic” data-centric web applications that you are
  - not building today
  - building with the wrong technology

# HTML DB: How it Works

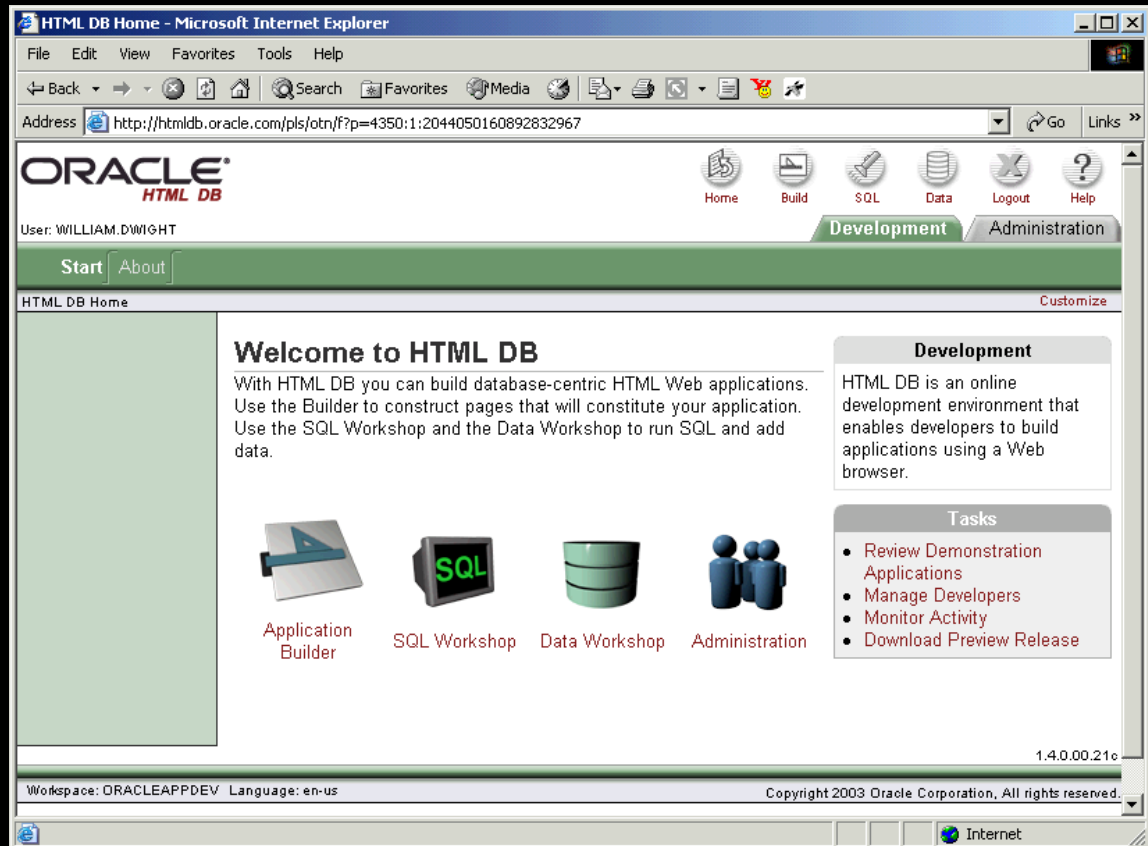
## Consolidated Workgroup DB Service

- Centrally deployed and managed
- Accessed anywhere via a browser
- Declarative development style



# Functionality Overview

- Administration
- Data Workshop
- SQL Workshop
- Application Builder



# Administration

- Manage workspaces
- Manage users and developers
- Provision resources
- Monitor usage

Oracle HTML DB Service Administration - Microsoft Internet Explorer

File Edit View Favorites Tools Help

Back Forward Stop Refresh Home Search Favorites Media

Address <http://htmldb.oraclecorp.com/pls/htmldb/f?p=4050:3:14917917444017231605> Go Links

ORACLE<sup>®</sup>  
HTML DB

User: WILLIAM.DWIGHT Logout Help

Home Service Administration Workspace Administration Monitoring

Administration Home

HTML DB Administration

### Manage HTML DB Service

- Manage Engine Settings
- Manage Logs
- Manage Session State
- Toggle Provisioning Status

### Manage Workspaces

- Create New Workspace
- Import Workspace
- Export Workspace
- Manage Workspaces
- Report Workspace Attributes
- Remove Workspace
- Manage Schema to Workspace Assignments
- Manage Application Developers

### Monitor

#### Administration

This page provides links to commonly performed tasks accomplished performed to administer the HTML DB service.

#### Notifications

- Service Requests (37, 3 pending)
- Change Requests (1, 0 pending)

1.4.0.00.21b

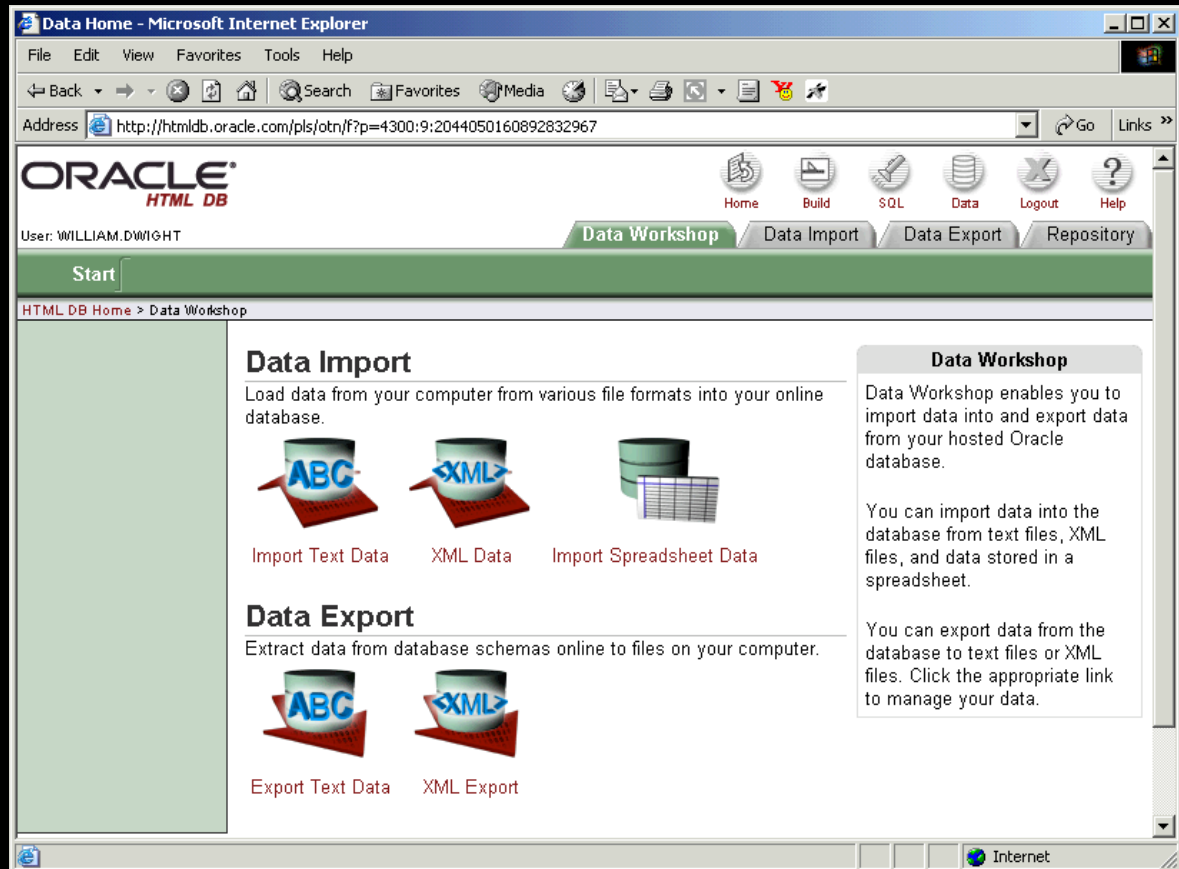
Workspace: INTERNAL Language: en-us Copyright 2003 Oracle Corporation, All rights reserved.

Internet



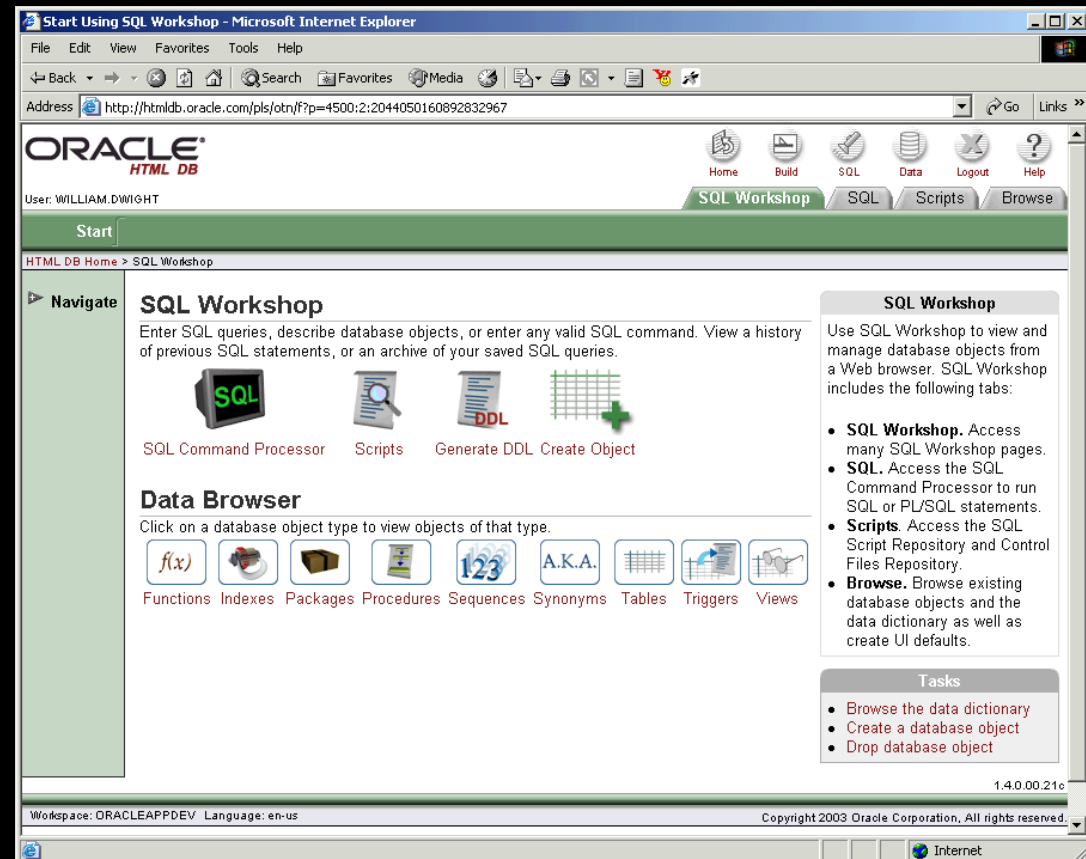
# Data Workshop

- Import Data
- Export Data
- Text, XML, Spreadsheets



# SQL Workshop

- View Database Objects
- Create Database Objects
- Query by Example
- Browse Data Dictionary
- Run Scripts



# Application Builder

- Navigation
- Reports
- Forms
- Charts
- Templates
- Security
- Internationalization

Application Builder - Microsoft Internet Explorer

File Edit View Favorites Tools Help

Address http://htmlmdb.oracle.com/pls/otn/www\_flow.accept

ORACLE HTML DB

User: WILLIAM.DWIGHT

Application Pages Wizards Utilities

Home Processes Items Computations NavBar Tabs LOVs Trees Lists Menus Shortcuts WebServices Templates Builds Security

HTML DB Home > Builder - Application 9121

Navigate

Available Applications: 9121 Example Flows Application Go

Current Application: 9121  
Updated: Monday 2003.07.21 12:21:51  
Authentication: INTERNAL

Alias: 9121  
Owner: WHD  
Template: Red 2 level tabs

Run Create Application Edit Attributes Export / Import

Edit Page: 1 Go View Mode: List Detail

page list page count: 20

0. show on every page	10. Items
1. Basic Report	12. tree
2. Updatable Report	13. Report
3. Select Row To Edit	14. Excel Charting
4. Updatable Report	15. Chart From Query
5. Sample Report with Row Template	16. Add an Employee
6. Advanced LOV	17. Insert EMP 2
7. Example Charts	18. Insert EMP 3

Application Builder

An application is a collection of pages that share a common session state definition and authentication method.

To locate a specific application, make a selection from the available application list and click **Go**.

To edit a specific page, enter the page ID in the Edit Page field and click **Go**, or click the page name.

Tasks

- Manage Developers
- Monitor Activity
- Review Demonstrations
- Change Password
- Extend this Application
- Delete this Application

Internet

# Packaging

- Bundled with 10g EE and SE
- Supported in 9iR2

ORACLE®

D E M O N S T R A T I O N

HTML DB

ORACLE®

A large, stylized 'Q&A' logo is centered in the background. The 'Q' is a large, dark grey, serif letter. The ampersand is a bright red, cursive-style symbol. The 'A' is a large, dark grey, serif letter. The text 'QUESTIONS' and 'ANSWERS' is overlaid on the logo in white, bold, sans-serif capital letters.

QUESTIONS  
ANSWERS

ORACLE®